

Earnings reports for the week...

E EARNINGS WHISPERS

Most Anticipated Earnings Releases

for the week beginning **April 22, 2024**

Monday		Tuesday		Wednesday		Thursday		Friday
Before Open	After Close	Before Open	After Close	Before Open	After Close	Before Open	After Close	Before Open
 verizon	 CLIFFS	 gm	 TESLA	 BOEING	 Meta	 OSI SYSTEMS, INC.	 Microsoft	 ExxonMobil
 AZZ	 NUCOR	 ups	 VISA	 AT&T	 IBM	 Royal Caribbean Group	 Alphabet	 Chevron
 Albertsons Companies	 SAP	 GE	 ENPHASE	 VERTIV	 Ford	 American Airlines	 intel	 abbvie
 TRUIST	 cadence	 PEPSICO	 TEXAS INSTRUMENTS	 Humana	 CHIPOTLE	 Newmont	 Snap Inc.	 COLGATE-PALMOLIVE
 ZIONS BANCORPORATION	 AGNC	 LOCKHEED MARTIN	 Steel Dynamics, Inc.	 GENERAL DYNAMICS	 servicenow	 Altria	 ROKU	 HCA Healthcare
 Bank of Hawaii	 Ameriprise Financial	 PRINCIPAL FINANCIAL GROUP	 CHUBB	 ODFL	 VIKING	 CATERPILLAR	 Western Digital	 Charter
 HBT Financial	 Globe Life	 Spotify	 SEAGATE	 Amphenol	 Lam RESEARCH	 Southwest	 dexcom	 ACM RESEARCH
 AMERICAN WATER WORKS COMPANY	 MEDPACE	 RTX	 Baker Hughes	 Boston Scientific	 Celestica	 Bristol Myers Squibb	 T-Mobile	 Autoliv
 sify	 PCI	 jetBlue	 Weatherford	 M I HOMES	 VALE	 mobileye	 GILEAD	 CENTENE Corporation
	 ALEXANDRIA	 HALLIBURTON	 MATTEL	 Biogen	 align	 AstraZeneca	 AGNICO EAGLE	 Ball

© 2024 Earnings Whispers

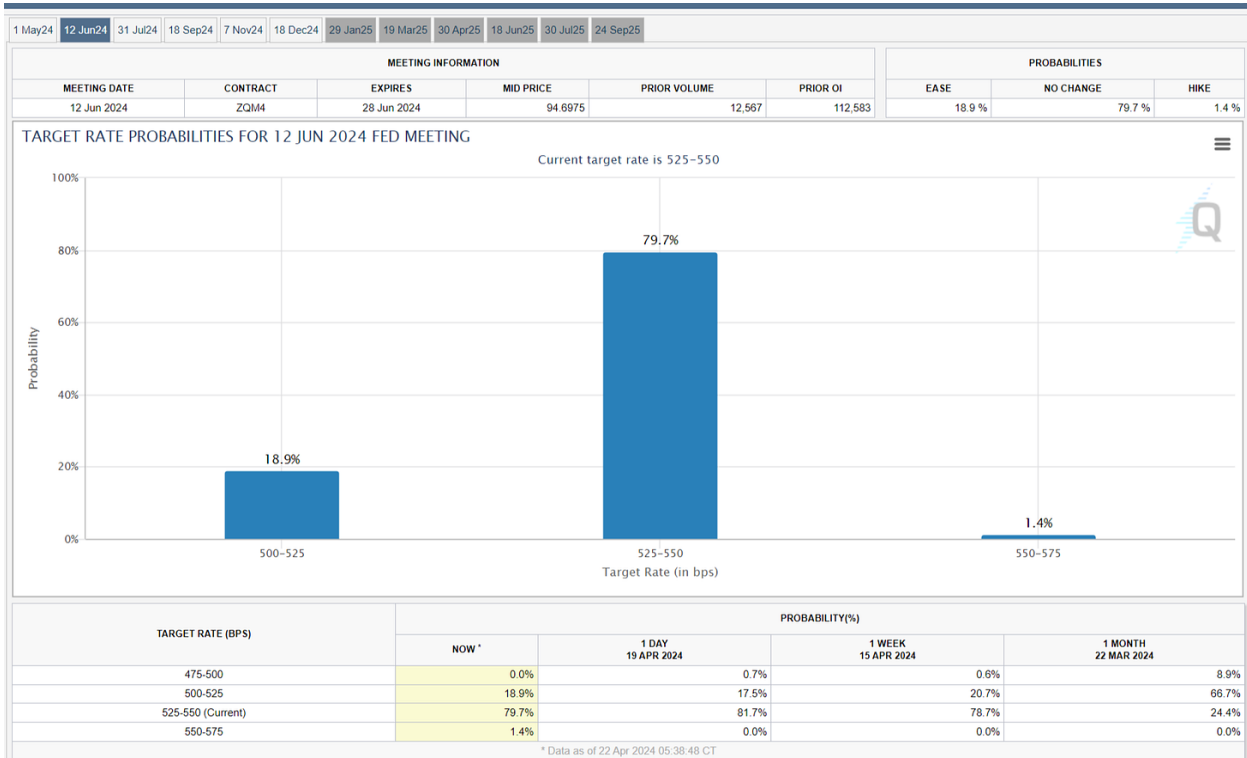
Macro reports for the week...

TIME (ET)	REPORT	PERIOD	ACTUAL	MEDIAN FORECAST	PREVIOUS
MONDAY, APRIL 22					
	None scheduled				
TUESDAY, APRIL 23					
9:45 am	S&P flash U.S. services PMI	April	52		51.7
9:45 am	S&P flash U.S. manufacturing PMI	April	52		51.9
10:00 am	New home sales	March	670,000		662,000
WEDNESDAY, APRIL 24					
8:30 am	Durable-goods orders	March	2.8%		1.3%
8:30 am	Durable-goods minus transportation	March	--		0.5%
THURSDAY, APRIL 25					
8:30 am	GDP	Q1	2.2%		3.4%
8:30 am	Initial jobless claims	April 20	215,000		212,000
8:30 am	Advanced U.S. trade balance in goods	March	--		-\$90.6B
8:30 am	Advanced retail inventories	March	--		0.5%
8:30 am	Advanced wholesale inventories	March	--		0.5%
10:00 am	Pending home sales	March	flat		1.6%
FRIDAY, APRIL 26					
8:30 am	Personal income (nominal)	March	0.5%		0.3%
8:30 am	Personal spending (nominal)		0.6%		0.8%
8:30 am	PCE index]		0.3%		0.3%
8:30 am	PCE (year-over-year)		2.6%		2.5%
8:30 am	Core PCE index		0.3%		0.3%
8:30 am	Core PCE (year-over-year)		2.7%		2.8%
10:00 am	Consumer sentiment (final)	April	77.9		77.9

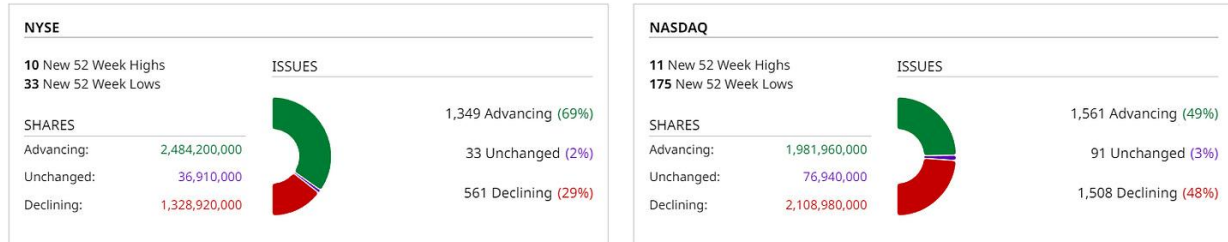
CPI spreadsheet...

2022	Jan	Feb	March	April	May	June	July	August	Sept	Oct	Nov	Dec
MoM	0.60	0.70	1.00	0.40	0.90	1.20	0.00	0.20	0.40	0.50	0.20	0.10
YoY	7.50	7.90	8.50	8.30	8.60	9.10	8.50	8.30	8.20	7.70	7.10	6.50
2023	Jan	Feb	March	April	May	June	July	August	Sept	Oct	Nov	Dec
MoM	0.50	0.40	0.10	0.40	0.10	0.20	0.20	0.60	0.40	0.00	0.10	0.20
YoY	6.40	6.00	5.00	4.90	4.00	3.00	3.20	3.70	3.70	3.20	3.10	3.20
2024	Jan	Feb	March	April	May	June	July	August	Sept	Oct	Nov	Dec
0.25% MoM	0.30	0.40	0.40	0.25	0.25	0.25	0.25	0.25	0.25	0.25	0.25	0.25
YoY	0.30	3.20	3.50	3.35	3.50	3.55	3.60	3.25	3.10	3.35	3.50	3.55
2024	Jan	Feb	March	April	May	June	July	August	Sept	Oct	Nov	Dec
0.20% MoM	0.30	0.40	0.40	0.20	0.20	0.20	0.20	0.20	0.20	0.20	0.20	0.20
YoY	3.00	3.20	3.50	3.30	3.40	3.40	3.40	3.00	2.80	3.00	3.10	3.10
2024	Jan	Feb	March	April	May	June	July	August	Sept	Oct	Nov	Dec
0.15% MoM	0.30	0.40	0.40	0.15	0.15	0.15	0.15	0.15	0.15	0.15	0.15	0.15
YoY	3.00	3.20	3.50	3.25	3.30	3.25	3.20	2.75	2.50	2.65	2.70	2.65
2024	Jan	Feb	March	April	May	June	July	August	Sept	Oct	Nov	Dec
0.10% MoM	0.30	0.40	0.40	0.10	0.10	0.10	0.10	0.10	0.10	0.10	0.10	0.10
YoY	3.00	3.20	3.50	3.20	3.20	3.10	3.00	2.50	2.20	2.30	2.30	2.20
2024	Jan	Feb	March	April	May	June	July	August	Sept	Oct	Nov	Dec
0.05% MoM	0.30	0.40	0.40	0.05	0.05	0.05	0.05	0.05	0.05	0.05	0.05	0.05
YoY	3.00	3.20	3.50	3.15	3.10	2.95	2.80	2.25	1.90	1.95	1.90	1.75
2024	Jan	Feb	March	April	May	June	July	August	Sept	Oct	Nov	Dec
0.00% MoM	0.30	0.40	0.40	0.00	0.00	0.00	0.00	0.00	0.00	0.00	0.00	0.00
YoY	3.00	3.20	3.50	3.10	3.00	2.80	2.60	2.00	1.60	1.60	1.50	1.30

FOMC updates...



New highs vs new lows...



Summary Of Stocks With New Highs And Lows [Details](#)

Overall (5177 Total Components)	5-Day	1-Month	3-Month	6-Month	52-Week	Year-to-Date
Today's New Highs (% of total)	997 (19%)	124 (2%)	61 (1%)	44 (1%)	26 (1%)	54 (1%)
Today's New Lows (% of total)	1,805 (35%)	1,311 (25%)	610 (12%)	265 (5%)	216 (4%)	539 (10%)
Difference	-808	-1,187	-549	-221	-190	-485
NYSE (1933 Total Components)	5-Day	1-Month	3-Month	6-Month	52-Week	Year-to-Date
Today's New Highs (% of total)	406 (21%)	49 (3%)	27 (1%)	19 (1%)	10 (1%)	23 (1%)
Today's New Lows (% of total)	542 (28%)	398 (21%)	136 (7%)	50 (3%)	33 (2%)	114 (6%)
Difference	-136	-349	-109	-31	-23	-91
NASDAQ (3046 Total Components)	5-Day	1-Month	3-Month	6-Month	52-Week	Year-to-Date
Today's New Highs (% of total)	548 (18%)	64 (2%)	25 (1%)	17 (1%)	11 (0%)	22 (1%)
Today's New Lows (% of total)	1,204 (40%)	878 (29%)	452 (15%)	205 (7%)	175 (6%)	404 (13%)
Difference	-656	-814	-427	-188	-164	-382
NYSE Arca (198 Total Components)	5-Day	1-Month	3-Month	6-Month	52-Week	Year-to-Date
Today's New Highs (% of total)	43 (22%)	11 (6%)	9 (5%)	8 (4%)	5 (3%)	9 (5%)
Today's New Lows (% of total)	59 (30%)	35 (18%)	22 (11%)	10 (5%)	8 (4%)	21 (11%)
Difference	-16	-24	-13	-2	-3	-12

Market momentum...

Name	5 Day Mov Avg	20 Day Mov Avg	50 Day Mov Avg	100 Day Mov Avg	150 Day Mov Avg	200 Day Mov Avg
S&P 500 Index	53%	20%	35%	53%	71%	68%
S&P 500 Consumer Discretionary	49%	6%	19%	40%	66%	62%
S&P 500 Consumer Staples	87%	47%	58%	68%	74%	63%
S&P 500 Energy	57%	39%	96%	91%	83%	83%
S&P 500 Financials	82%	23%	46%	69%	87%	87%
S&P 500 Health Care	38%	6%	14%	31%	59%	55%
S&P 500 Industrials	33%	14%	31%	64%	79%	77%
S&P 500 Information Technology	17%	2%	6%	31%	62%	65%
S&P 500 Materials	54%	7%	36%	71%	71%	75%
S&P 500 Real Estate	58%	16%	13%	13%	48%	35%
S&P 500 Comm Services	59%	27%	32%	45%	59%	64%
S&P 500 Utilities	93%	83%	90%	83%	83%	63%

More S&P Indexes

Name	5 Day Mov Avg	20 Day Mov Avg	50 Day Mov Avg	100 Day Mov Avg	150 Day Mov Avg	200 Day Mov Avg
S&P 100 Index	60%	25%	39%	60%	74%	74%
S&P 500 Index	53%	20%	35%	53%	71%	68%
S&P 500 ESG Index	57%	20%	36%	52%	69%	66%
S&P 500 Growth Index	32%	11%	22%	49%	72%	73%
S&P 500 Value Index	58%	22%	37%	53%	69%	65%
S&P Midcap 400	51%	15%	30%	48%	63%	61%
S&P Smallcap 600	64%	18%	27%	36%	52%	52%

Russell Indexes

Name	5 Day Mov Avg	20 Day Mov Avg	50 Day Mov Avg	100 Day Mov Avg	150 Day Mov Avg	200 Day Mov Avg
Russell 1000 Index	49%	16%	30%	48%	64%	62%
Russell 2000 Index	55%	20%	26%	34%	46%	46%
Russell 3000 Index	52%	18%	27%	40%	54%	53%

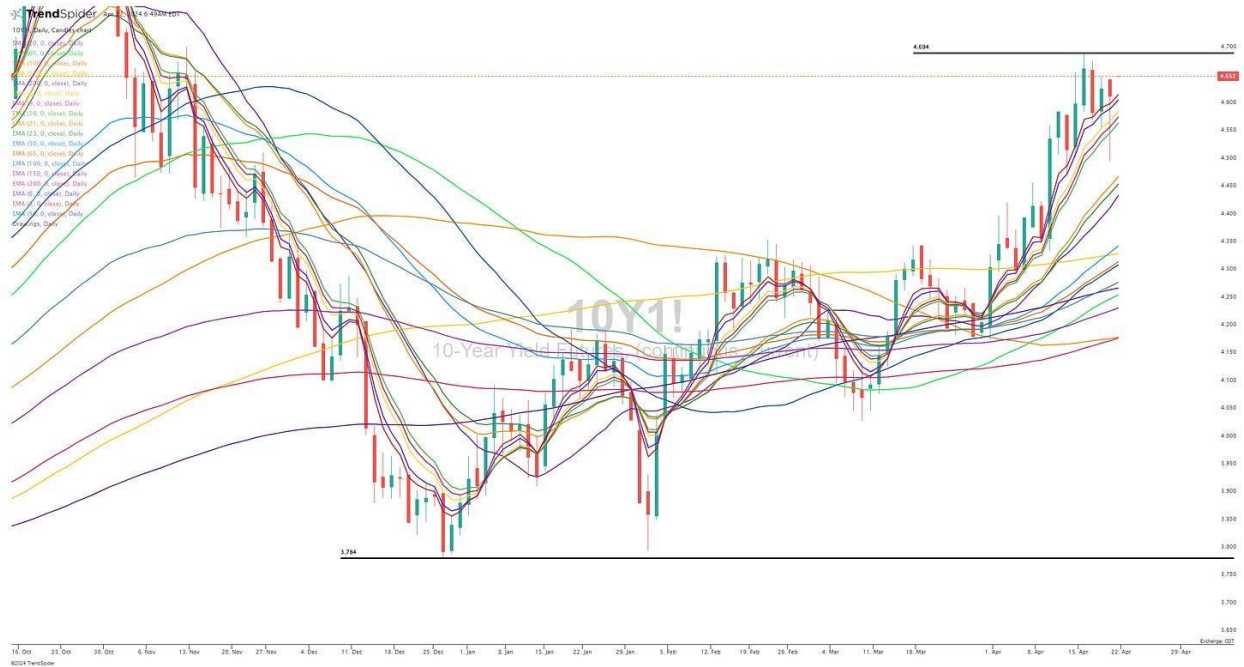
Dow Jones Indexes

Name	5 Day Mov Avg	20 Day Mov Avg	50 Day Mov Avg	100 Day Mov Avg	150 Day Mov Avg	200 Day Mov Avg
Dow Industrials	60%	23%	27%	53%	63%	67%

Nasdaq Indexes

Name	5 Day Mov Avg	20 Day Mov Avg	50 Day Mov Avg	100 Day Mov Avg	150 Day Mov Avg	200 Day Mov Avg
Nasdaq 100	29%	10%	18%	40%	57%	59%
Nasdaq Composite	43%	15%	22%	34%	47%	47%

\$TNX (10Y Treasury)



Finviz screen #1: ACGL AEM AGIO AGR AKR ALPN ARCC AXP BAC BBAR BK BTSG BXSL CCJ COF CPNG DB DFS EDR EGO EQX FIHL FITB FSLR GBDC GCT GGAL GKOS GLNG GOLD GOOG GOOGL HBM HSBC HTGC IBKR INSP ITCI KO LPG LPLA MTB NEM NVEI NWG OBDC OSCR OZK PAAS PGR PM RTX SILV SKYW SMTC STAA SWAV SYF TCOM TECK TKO TMDX VIRT WES WHD WPM YMM ZETA

Criteria: stock price above \$5, market cap above \$1 billion, above 20d sma, above 50d sma, above 200d sma, average daily volume above 500k, sales growth above 10%

Below the paywall is my:

1. *morning commentary*
2. *daily watchlists with charts*
3. *link to current trading portfolio with all positions, entry prices and stop losses*
4. *YTD trading stats and performance*

[Link to current trading portfolio \[click here\]](#)

Commentary:

I only have 5 positions in my trading portfolio because the markets remain very choppy, the bounces aren't working, the breakouts are non-existent. It's still not the time to be aggressive or

take risks. Better to preserve capital and wait for better price action. Then we can get aggressive.

[Current trading portfolio \[click here\]:](#)

1. AGR
 2. CPNG
 3. GKOS
 4. HAL
 5. SHOP
-

[Current watchlist \[click here\]:](#)

My daily watchlist with charts is posted on the first sheet on my trading portfolio spreadsheet...
<https://docs.google.com/spreadsheets/d/1vSPXa7re9L6ncpDnQcd9k4S2BdxBpIXJK1lx453K7W4/edit#gid=0>

Have a great day,

~Jonah Lupton, CEO/CIO of [Lupton Capital](#)

You can follow me on Twitter at [@JonahLupton](#)